

The CAMELLA



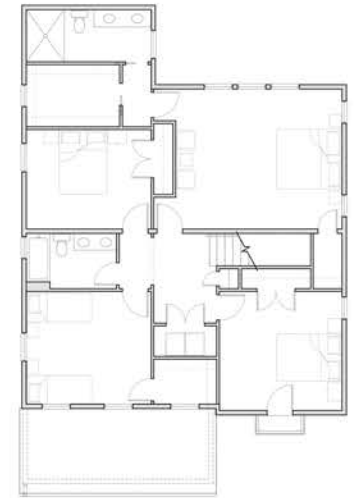
With a big front porch and huge living areas, the Camella has it all.

OVERALL SUMMARY

Total Interior Area	+/- 3,763 square feet
Total Bedrooms	6 (+ office)
Total Bathrooms	3.5
Ceiling Height	+/- 8'-0" Basement +/- 10'-0" First Floor +/- 9'-0" Second Floor
Laundry Location	2nd floor



FIRST FLOOR PLAN



SECOND FLOOR PLAN



BASEMENT FLOOR PLAN

ROOM SUMMARY

Level	Room	Dimensions
Basement	Family Room	14.1' x 31.9'
	Bedroom 5	11.3' x 13.1'
	Storage	11.3' x 16.2'
	Bathroom 4	5.8' x 9.3'
First Floor	Living Room	12.9' x 14.9'
	Dining Room	8.9' x 14.9'
	Kitchen	14.9' x 23.0'
	Office	11.6' x 13.1'
	Bathroom 2	5.9' x 5.9'
	Bedroom 4	12.9' x 14.0'
Second Floor	Master Bedroom	14.9' x 17.4'
	Master Bathroom	5.5' x 13.1'
	Master Closet	6.5' x 9.9'
	Bedroom 2	11.9' x 13.1'
	Bedroom 3	12.5' x 13.9'
	Bedroom 4	10.4' x 13.1'
	Bathroom 3	6.2' x 9.4'
Exterior	Front Porch	8.0' x 20.4'
	Rear Deck	8.0' x 20.4'
	2nd floor Balcony	2.0' x 4.0'

Note: All dimensions are estimates and are subject to change based on construction and field changes.



All drawings are for illustrative purposes only. All imagery and details subject to change.