



SUFFRAGE POINT At Hyattsville

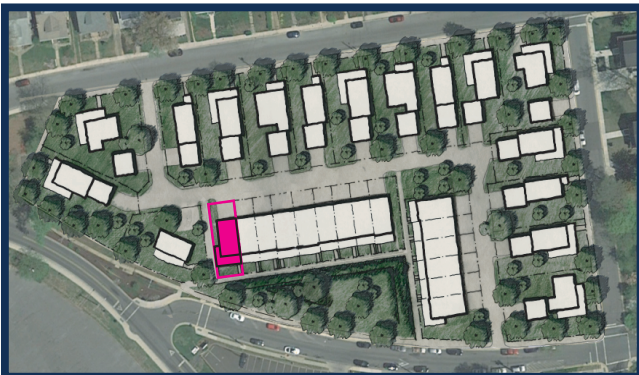
4034 Gallatin Street
Hyattsville, Maryland 20781

- 2,320 SQ/FT
- 4 BR
- 3.5 BA
- 2 CAR GARAGE
- 3,269 SQ/FT LOT

Directly adjacent to the vibrant Hyattsville Arts District, Suffrage Point delivers a traditional neighborhood ambiance in the heart of a thriving community. These new-construction luxury homes showcase Craftsman style details coupled with clean, elegant & modern amenities designed to complement the classic residential architecture found throughout this beautiful and historic Hyattsville community.

Suffrage Point is conveniently located within walking distance to Shops, Restaurants and the West Hyattsville Metro. This modern development also directly borders Thirty-Two beautiful acres of Scenic Public Parkland with access to Playgrounds, a Swimming Pool & Recreation Center with Restrooms, Walking and Biking Trails that connect to the Northwest Branch Trail, Picnic Pavilions, as well as a variety of sports & fitness facilities.

Priced from
\$800,000
Anticipated Availability Late 2021



Werrlein Properties
Suffrage Point Development
is proudly represented by;

kw **KELLERWILLIAMS.**
FLAGSHIP of MARYLAND

For details on this listing, please contact
Keller Williams Flagship Agent

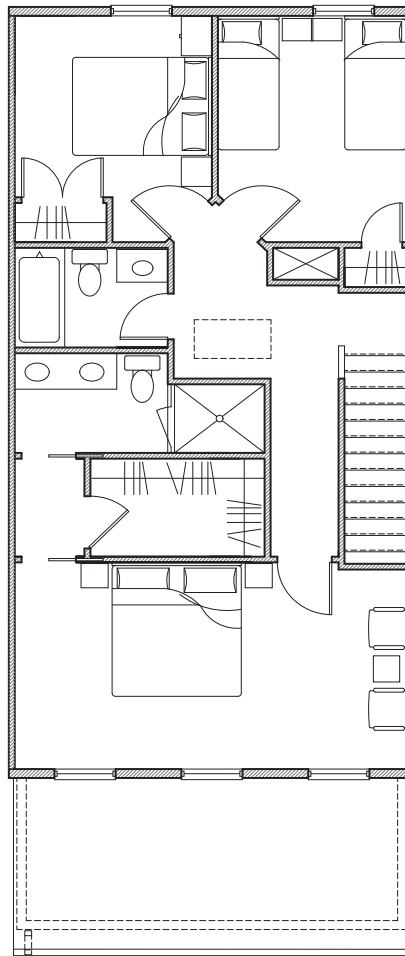
Lisa Burdyn, Realtor®, GRI
570-840-6913 | Lisa@werrleinproperties.com



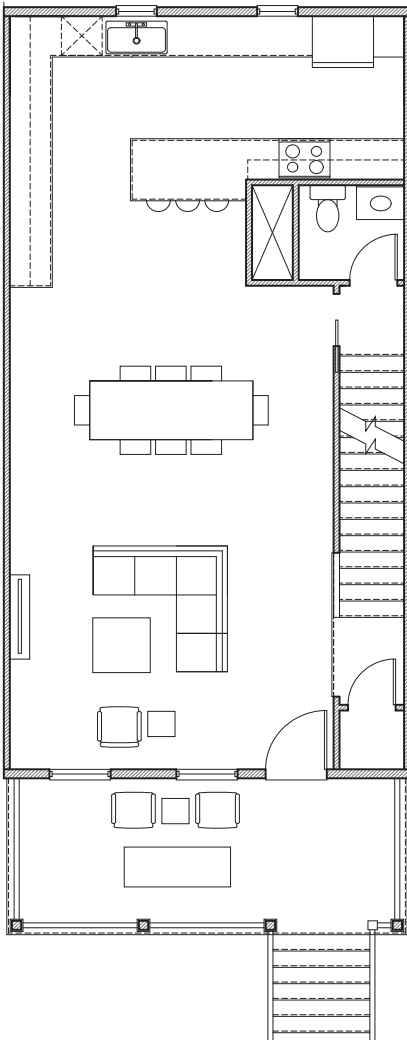
*"We like to think that our business isn't about transactions;
It's more about relationships & partnerships!"* - Jonathan Werrlein

www.werrleinproperties.com • 570-840-6913
522 Defense Highway • Annapolis, MD 21401

UPPER FLOOR



MAIN FLOOR



ROOM DIMENSIONS

Upper Floor	Primary Bedroom	10.5' x 21.3'
	Primary Ensuite	5.1' x 13.3'
	Primary Closet	5.0' x 9.5'
	Bedroom 2	9.2' x 10.8'
	Bedroom 3	11.5' x 10.3'
	Bathroom 3	5.1' x 9.5'
Main Floor	Living Room	14.0' x 17.9'
	Dining Room	14.0' x 17.9'
	Kitchen	13.8' x 21.3'
	Bathroom 2	4.5' x 6.0'
Lower Floor	Garage	18.9' x 21.3'
	Bedroom 4	10.0' x 13.8'
	Bathroom 4	5.1' x 7.3'
	Laundry/Utility	6.0' x 13.8'
Exterior	Front Porch	8.0' x 21.3'

Note: All dimensions are estimated and are subject to change based on construction and field conditions.

SUMMARY

Total Interior Area 2,074 Sq/Ft

Total Bedrooms 4

Total Bathrooms 3.5

Ceiling Heights

+/- 8'-0" Lower Floor

+/- 10'-0" Main Floor

+/- 9'-0" Upper Floor

Lower Floor Laundry

LOWER FLOOR

