



5200 41st Avenue
Hyattsville, Maryland 20781

- 2,860 SQ/FT
- 5 BR (OPT 6) + Office
- 3.5 BA (OPT 4.5)
- ATTACHED 2 CAR GARAGE
- 6,647 SQ/FT CORNER LOT

Directly adjacent to the vibrant Hyattsville Arts District, Suffrage Point delivers a traditional neighborhood ambiance in the heart of a thriving community. These new-construction luxury homes showcase Craftsman style details coupled with clean, elegant & modern amenities designed to complement the classic residential architecture found throughout this beautiful and historic Hyattsville community.

Suffrage Point is conveniently located within walking distance to Shops, Restaurants and the West Hyattsville Metro. This modern development also directly borders Thirty-Two beautiful acres of Scenic Public Parkland with access to Playgrounds, a Swimming Pool & Recreation Center with Restrooms, Walking and Biking Trails that connect to the Northwest Branch Trail, Picnic Pavilions, as well as a variety of sports & fitness facilities.

Priced from

\$1M

Anticipated Availability Late 2021



Werrlein Properties
Suffrage Point Development
is proudly represented by;



KELLER WILLIAMS.
FLAGSHIP of MARYLAND

For details on this listing, please contact
Keller Williams Flagship Agent

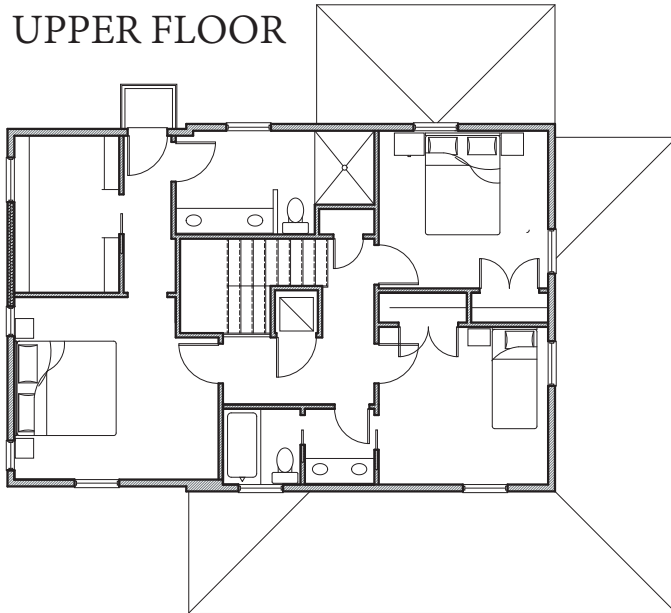
Lisa Burdyn, Realtor®, GRI

570-840-6913 | Lisa@werrleinproperties.com



*"We like to think that our business isn't about transactions;
It's more about relationships & partnerships!"* - Jonathan Werrlein

www.werrleinproperties.com • 570-840-6913
522 Defense Highway • Annapolis, MD 21401

UPPER FLOOR


ROOM DIMENSIONS

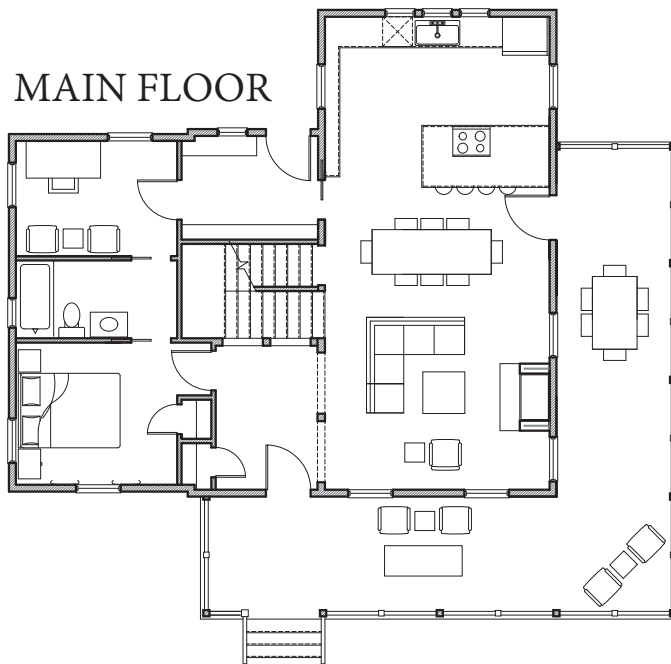
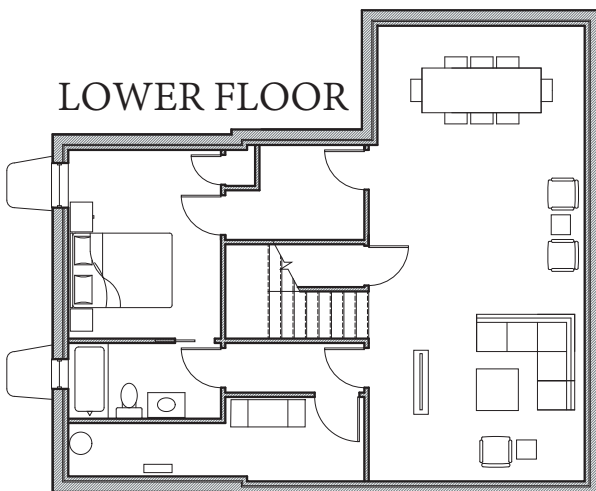
Upper Floor	Primary Bedroom	12.3' x 13.9'
	Primary Ensuite	5.1' x 13.3'
	Primary Closet	7.0' x 13.5'
	Bedroom 2	10.6' x 11.3'
	Bedroom 3	10.6' x 11.3'
	Bathroom 3	5.1' x 10.2'

Main Floor	Living Room	12.5' x 15.1'
	Dining Room	8.0' x 15.1'
	Kitchen	12.5' x 15.1'
	Office	7.9' x 10.9'
	Bathroom 2	5.1' x 10.9'
	Bedroom 4	9.5' x 10.9'

Lower Floor	Family Room	30.7' x 13.9'
	Bedroom 5	10.3' x 12.8'
	Bathroom 4	5.3' x 10.3'

Exterior	Front Porch	8.0' x 32.0'
	Side Porch	8.0' x 23.9'
	Upper Floor Balcony	2.5' x 3.5'

Note: All dimensions are estimated and are subject to change based on construction and field conditions.

MAIN FLOOR

LOWER FLOOR


SUMMARY

Total Interior Area 2,860 Sq/Ft

Total Bedrooms 5 (+ Office)

Total Bathrooms 3.5

Ceiling Heights

+/- 8'-0" Lower Floor

+/- 10'-0" Main Floor

+/- 9'-0" Upper Floor

Upper Floor Laundry